



# BarlowTyrie

Est 1920



## COMPLETE CARE & MAINTENANCE GUIDE



## COMPLETE CARE & MAINTENANCE GUIDE

### PDF PAGE

- 4. Aluminum
- 8. Awning Fabric - Sunbrella®
- 10. Ceramics
- 12. Glass
- 14. Cord
- 17. Covers & Storage Solutions
- 21. Cushions
- 22. Parasols & Canopies
- 30. Powder Coating
- 33. Security Fastenings
- 34. Slings & Woodland Screen Curtains
- 40. Stainless Steel
- 44. Teak





## Care of Aluminium Furniture

### Properties

Aluminium is a strong, light material, which makes it ideal for outdoor furniture that is easy to move in use. All our aluminium furniture has a powder coated finish.



Aura High Dining Carver x 4 with Arctic White Frame and Pearl Sling (1AUHC.02.505)

Aura High Dining Table 140 with Arctic White Frame (2AUH14.02)

### Powder coating

Is a process that adds a decorative, protective coating to metal, which prevents oxidation and gives an attractive, hard wearing surface.

To achieve this, we -

- prepare the aluminium with a pre-wash, etch and prime;
- electrostatically apply the powder coating;
- Bake in an industrial oven to 'cure' the finish;
- to give a hard, smooth attractive finish.



Aura Armchair with Graphite frame and Charcoal Sling (1AUA.01.500)



## Do I need to store my furniture during the winter?

No, you can leave Barlow Tyrie furniture outdoors, uncovered, all year round. If you choose to cover your furniture during the winter you should use a material that allows wood to breathe.

We make our furniture covers using WeatherMAX®, a modified high UV resistant polyester fabric that offers superior strength and durability. These covers are available from your Barlow Tyrie stockist.

Aura Planter 65 with Teak Edging (3AUP65.01).  
Other size Planters are available



Around Armchair x 6 with Arctic White frame and Oyster Sling (1AROA.02.515)

Around Dining Table 220 with Arctic White Frame (2ARO22.02)



## Care Products

Special care products are available to maintain the beauty of your Barlow Tyrie furniture. We recommend you use the following care product for aluminium furniture.



Powder Coated Stainless Steel & Aluminium Cleaner

Product code: 4AC

Description: Powder coated stainless steel & aluminium cleaner easily removes dirt, grease, oil, pollutants and mould from furniture. Supplied with a special applicator pad.

Quantity: 1 litre / 33 fl oz

Available from your Barlow Tyrie Stockist.

## Product Care Videos

Our product care videos and informative care sheets help you keep your furniture in pristine condition.

[How to Clean Aluminium Outdoor Furniture](#)





## Repair & Maintenance Queries

UK and Europe – Please contact customer service via [uksales@teak.com](mailto:uksales@teak.com)

USA – Please contact customer service via [usasales@teak.com](mailto:usasales@teak.com)

Before carrying out any repair to your Barlow Tyrie furniture, please read our terms, conditions and warranty.



Aura Club Chair (1AUDA.01.500) and Aura Footstool (1AUFS.01.500), both with a Graphite Frame and Charcoal Sling

## Your Barlow Tyrie Stockist

You can search for your local Barlow Tyrie Stockist using this link [nearest stockist](#).

Aura Low Table 50 with Arctic White Frame (1AUL05.02)





## Care of Sunbrella® Awning Fabric - Safari®

Sunbrella® awning fabric: colours available are Forest Green .200, White Sand .201 and Pepper .204.

Safari is the only collection which features this option. This fabric is heavy duty, colour fast and weather resistant.



Safari® Armchair with Sunbrella® awning fabric in Forest Green (1SA.200)



Safari® Armchair with Sunbrella® awning fabric in White Sand (1SA.201) and Safari Tray (1SAT)

## Care & Maintenance

This material is suitable for outdoor use and require minimal maintenance. Ensure it is properly dry before storing.



**BarlowTyrie**

Est 1920

## Care Products

Special care products are available to maintain the beauty of your Barlow Tyrie furniture. We recommend you use the following care product for awning fabric.



### Fabric Weather Guard

Product code: 4FWG

Fabric Weather Guard protects the fabric and slows down the ageing effects of weathering. Supplied with its own special applicator pad.

Quantity: 1 litre / 33 fl oz

Available from your Barlow Tyrie Stockist.

## Repair & Maintenance Queries

UK and Europe – Please contact customer service via [uksales@teak.com](mailto:uksales@teak.com).

USA – Please contact customer service via [usasales@teak.com](mailto:usasales@teak.com).

Before carrying out any repair to your Barlow Tyrie furniture, please read our terms, conditions and warranty.

## Your Barlow Tyrie Stockist

You can search for your local Barlow Tyrie Stockist using this link [nearest stockist](#).



**BarlowTyrie**

Est 1920

## Care of Ceramic & Glass

In addition to Teak, we offer table tops in Ceramic and Glass, with several colour options to suit your taste.



Monterey Armchair, x4 (1MTA.T)  
and Monterey Table 200 with Italian  
Ceramic 'High Fired' Top in Oxide  
(2MT20.805)

## Ceramic

Our products Equinox, Mercury and Monterey are made from 'high-fired' ceramic, which is made in Italy by Laminam, who specialize in producing superior surface materials. The Mercury serving table (2MEMS) is available with a ceramic top in Oxide .805, Frost .806 and Dusk .808. Please state your colour preference when ordering.



Mercury Serving Table with Italian  
Ceramic 'High Fired' Top in Frost  
(2MEMS.806)

## Properties

- Scratch-proof, UV and weather-resistant (including frost and snow). Ideal for outdoor use.
- Exceptionally resistant to breakage.
- Non-porous and naturally hygienic.



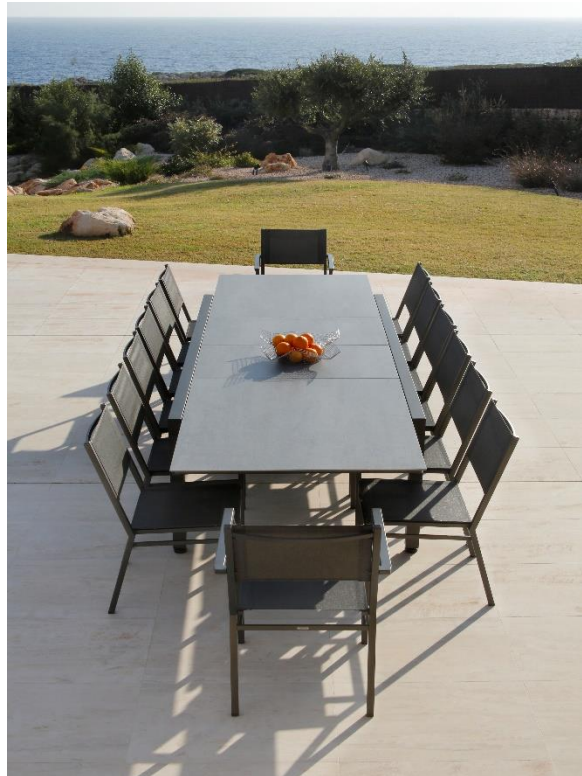
**BarlowTyrie**

Est 1920

## An Innovative Material

Manufactured using advanced techniques, the Laminam sheets feature chromatic properties that are unaltered over time. These Ceramic sheets have a thick single layer with a fibreglass mesh backing, designed to combine surface evenness with strength. We refer to this ceramic as 'high-fired' due to the process of firing in an electric kiln at exceptionally high temperatures (around 1220°C / over 2000°F) to produce a porcelain product that has a high surface strength.

These fine sheets are then cut, profiled, and polished by hand to give a smooth soft edge. The ceramic sheets we use are very large, which makes possible a large one-piece table top. In addition to being functional this ceramic has a lot of design detail. This revolutionary product also respects the environment with the use of natural raw materials.



Equinox Carver (x2) with Graphite frame and Carbon Sling (1EQPA.01.513), Equinox Side Chair (x 12) with Graphite frame and Carbon Sling (1EQP.01.513) and Equinox Extending Table 360 with Graphite Frame and Italian "High Fired" Ceramic Top in Dusk. All feature a Powder Coated Stainless Steel Frame.

## Care & Maintenance

Ceramic tops are very low maintenance. We recommend you wipe clean using soapy water and a sponge as and when needed. No annual sealing is required.



**BarlowTyrie**

Est 1920

## Glass (Mercury Dining Tables)

We make Mercury Dining Tables from acid-etched tempered glass with a matt finish. They are available in .604 Sea Ice, .605 Platinum and .606 Charcoal.

### Features

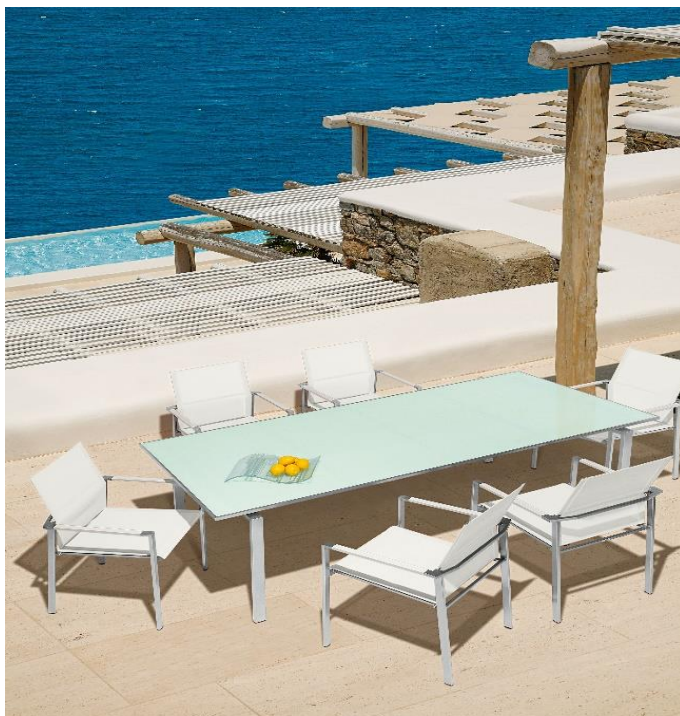
- Minimal care and maintenance.
- Strong and highly resistant to the outdoor environment.
- Tempered glass is a type of safety glass processed by controlled thermal or chemical treatments to increase its strength compared with normal glass.



Mercury Table 120 with Tempered Glass Top in Platinum (2MEC12.605)

## Care & Maintenance

We recommend you wipe clean using soapy water and a sponge as and when needed.



Mercury Table 220 with Tempered Glass Top in Sea Ice (2ME22.604) and Mercury Dining Armchair with Arctic White Arms and a Pearl Sling (1MEA.02.505)



**BarlowTyrie**

Est 1920

## Colour options

All ceramic and glass colour options can be viewed on our website or in our catalogue.

Equinox Lounger (x2) with Arctic White frame and Seagull Sling (1EQPL.02.512), and Equinox Lounger Low Table 49 with Arctic White frame and Italian "High Fired" Ceramic Top in Frost (2EQPLT.02.806). All feature a Powder Coated Stainless Steel Frame.



## Repair & Maintenance Queries

UK and Europe – Please contact customer service via [uksales@teak.com](mailto:uksales@teak.com)

USA – Please contact customer service via [usasales@teak.com](mailto:usasales@teak.com)

Before carrying out any repair to your Barlow Tyrie furniture, please read our terms, conditions and warranty.

## Your Barlow Tyrie Stockist

You can search for your local Barlow Tyrie Stockist using this link [nearest stockist](#).



**BarlowTyrie**

Est 1920

## Care of All-Weather Cord Furniture

We use Textilene® All-Weather Cord to give a stylish and innovative finish. Colours available are Brown (.400) and Chalk (.401).



Cocoon Deep Seating Armchair (1CCDA.401.10152.10025) with Chalk All-Weather Cord, Chalk (main) and Frost Chine (scatter cushion) fabrics.

All-weather cord is strong, colour fast and has a soft handle, making it ideal for outdoor furniture, requiring minimal maintenance.

## Do I need to store my furniture during the winter?



No, you can leave Barlow Tyrie furniture outdoors, uncovered, all year round. If you choose to cover your furniture during the winter you should use a material that allows wood to breathe. We make our furniture covers using WeatherMAX®, a modified high UV resistant polyester fabric that offers superior strength and durability. These covers are available from your Barlow Tyrie stockist.

Monterey Armchair (1MTA.401) with Chalk All-Weather Cord, Monterey Armchair Cushion in Adriatic Blue (800096.3941) and Cover for Monterey Armchair Deep Seating (400111)



**BarlowTyrie**

Est 1920

## Care Products

Special care products are available to maintain the beauty of your Barlow Tyrie furniture. We recommend you use the following care products for cord furniture.



### Fabric Cleaner

Product code: 4FC

Removes dirt and grease, oil, pollutants and mould from our cushions.

Quantity: 1 litre / 33 fl oz

Available from your Barlow Tyrie Stockist.



### Fabric Weather Guard

Product code: 4FWG

Fabric Weather Guard protects the fabric and slows down the ageing effects of weathering. Supplied with its own special applicator pad.

Quantity: 1 litre / 33 fl oz

Available from your Barlow Tyrie Stockist.



**BarlowTyrie**

Est 1920

## Repair & Maintenance Queries

UK and Europe – Please contact customer service via [uksales@teak.com](mailto:uksales@teak.com)

USA – Please contact customer service via [usasales@teak.com](mailto:usasales@teak.com)

Before carrying out any repair to your Barlow Tyrie furniture, please read our terms, conditions and warranty.

## Your Barlow Tyrie Stockist

You can search for your local Barlow Tyrie Stockist using this link [nearest stockist](#).

Monterey Deep Seating Armchair  
(1MTDA.400) with Brown All-  
Weather Cord





**BarlowTyrie**

Est 1920

## WeatherMax® Covers & Storage Bags

We make our furniture covers and storage bags from Weather MAX-LT®, a modified polyester fabric that is the best available for outdoor applications.



- Superior single layer construction
- Durable and strong
- UV-resistant with long-term colour retention
- High water repellence
- Breathable - allowing trapped moisture to disperse
- Rain and dust are prevented from penetrating
- Lightweight - easy to put on and remove
- A unique fastening ensures a secure fit

Monterey Armchair (1MTA.401) and Cover (400111)

Cushion Storage Bag (400810)  
fits 2 lounge cushions.

Cushion Storage Bag (400824)  
fits 4 armchair cushions.

Cushion Storage Bag (400828)  
fits 8 armchair cushions.





**BarlowTyrie**

Est 1920

## Care

The life and good looks of the cover depend a great deal on the way you care for it. Do not store the cover unless it is fully dry, using the storage pouch supplied.



Titan Table 240 (1T124) and Cover (400769)

## Please note

- Not all covers are custom made so the fit may not be 'made to measure'.
- Covers for standard dining groups are designed to cover the furniture with the chairs not under the table

## Helpful Hints

If the furniture has any sharp corners or edges, place foam rubber on the sharp edge to reduce the risk of puncture or abrasion of the cover.

For tables, placing an object, such as a beach ball, under the centre of the cover can help drain water.



Cover for Monterey Three-Seater Settee (400110)



**BarlowTyrie**

Est 1920

## Delivery Times

Please allow up to 12 weeks for the delivery of furniture covers. Contact your Barlow Tyrie stockist for information on availability.

## View Our Full Range

We list our full range of Covers and Storage bags in our catalogue or under the product it fits on our website.



Cover for 150cm circular  
Table and 6 Chairs



Another option to store cushions is our [Storage Chest 150](#). This chest is weather proof with the top and sides caulked with Sikaflex® polyurethane, marine deck sealant. The chest is ventilated and has a brass lock for security. The chest bottom prevents the ingress of insects yet is easily removed for cleaning. Opening and closing the chest lid is made easy with gas struts. This chest is perfect for the storage of your cushions.

Storage Chest 150 (3SC15)

## Your Barlow Tyrie Stockist

You can search for your Barlow Tyrie Stockist using this link [stockist](#).



**BarlowTyrie**

Est 1920

## A Smart Storage Solution

Our Storage Chest is weather proof with the top and sides caulked with Sikaflex® polyurethane, marine deck sealer. The chest is ventilated and has a brass lock for security. The chest bottom prevents the ingress of insects yet is easily removed for cleaning and the opening and closing of the chest lid is made easy with gas struts. It is the perfect place to store your Barlow Tyrie Cushions. Available from your Barlow Tyrie Stockist.



Storage Chest 150 (3SC15)



## Your Barlow Tyrie Stockist

You can search for your local Barlow Tyrie Stockist using this link [nearest stockist](#).



Titan Armchair x 5 (1TIA.08) with Titan Armchair Cushion in Porto Blue Chine (800084.3776), Titan Table 240 (2TI24) and Titan Bench 200 (1TI20) with Titan Bench Cushion (800085.3776) in Porto Blue Chine.





## Care of Cushions

We make our standard cushions from Sunbrella® fabric, a 100% solution dyed Teflon® coated acrylic fibre. You can choose Sunbrella® Rain® fabric at an additional cost, which features an extra barrier to make the fabric water repellent and the surface of the cushion quick drying.

## Features

- All-weather
- Fade resistant
- Easy to clean



Haven Three-Seater Settee with Natural cushions (1HAD3.5404) and Haven Conversation Table 100

We design our cushion covers for maximum weather protection, comfort and breath-ability.

## Maintenance

Cushions should not be left out in heavy rain for prolonged periods. If cushions do become saturated, place them on edge with the zip down until dry. One of the best ways to keep your cushions looking good and to minimize the need for deep or vigorous cleaning is to properly maintain the fabric. You can do this by brushing off dirt before it becomes embedded and wiping or spot cleaning spills as soon as they occur. It is easier to leave the cushion covers on during the cleaning process. A comprehensive guide to cleaning various spills is available on the [Sunbrella®](https://www.sunbrella.com) website.



**BarlowTyrie**

Est 1920

## Storage Guidance

We suggest you clean your cushions before storing them over the winter months so they are ready when the sun shines next year. Do not store cushions until fully dry.

## Care Products

Special care products are available to maintain the beauty of your Barlow Tyrie furniture. We recommend you use the following care product for your fabrics.



### Fabric Cleaner

Product code: 4FC

Removes dirt, grease, oil, pollutants and mould from cushions.

Quantity: 1 litre / 33 fl oz

Available from your Barlow Tyrie Stockist.



### Fabric Weather Guard

Product code: 4FWG

Protects the fabric and slows down the ageing effects of weather. Supplied with an applicator pad.

Quantity: 1 litre / 33 fl oz

Available from your Barlow Tyrie Stockist.



## Repair & Maintenance Queries

UK and Europe – Please contact customer service [uksales@teak.com](mailto:uksales@teak.com)

USA – Please contact customer service [usasales@teak.com](mailto:usasales@teak.com)

Before carrying out any repair to your Barlow Tyrie furniture, please read our terms, conditions and warranty.

## Cushion Colours

We offer a wide range of fabric colours. Our website allows you to see the furniture with any of our range of fabrics and from every angle, so you can choose with confidence. The choice is yours!



Layout Single Seat - High Arms with an Arctic White Frame, shown with upholstery and back pillow in Mimosa with a small cushion in Marble  
(1LYMACH.02.3938.3938V.3966)



Layout Single Seat - High Arms with a Forge Grey Frame, shown with upholstery and back pillow in Frost Chine with a small cushion in Blush  
(1LYMACH.14.10025.10025V.3965)



## Care of Parasols and Canopies



Napoli Parasol 2.8 metre Ø - 38mm pole with tilt (4NA28C.302).

Our range of Napoli parasols are available in circular, rectangular, or square form with either a traditional pole or with cantilever mounting. They feature either a tilt mechanism or a telescopic mechanism.

## Parasol features

- Frames are made from eucalyptus wood
- Treated with Lignalac® Politur polyurethane sealant
- Beautiful nickel-plated brass or aluminium and stainless-steel fittings
- Minimal maintenance
- The aluminium and steel components on the Napoli cantilever parasols are powder coated a champagne colour



Napoli Cantilever Parasol 4 metre square (4NAC40S.302)

## Storage cover

All our parasols are supplied complete with a night storage cover. Optional covers (small 4PSCS or large 4PSCL) are available and can be purchased from your Barlow Tyrie Stockist.



## Canopy

We can supply a replacement canopy for our current and some discontinued parasols. Contact our customer service with the parasol model to enquire.

**Sunbrella® canopy:** colour available is Canvas .302. All our Napoli standard and cantilever parasols feature this fabric, which is a durable, 100% solution dyed acrylic. The colour is locked deep inside the synthetic yarn, giving it excellent resistance to the fading caused by sunlight and cleaning.



Napoli Parasol 3.5 metre Ø - 61mm pole (4NA35C.302). This parasol has a Telescopic mechanism to allow it to close over a table.

## Cleaning

At the end of the season, we suggest you clean your parasol before storing it in a dry, well-ventilated area. Although Sunbrella® fabric will not mildew or mould, we recommend that the canopy is cleaned regularly to prevent the accumulation of dirt on the fabric.

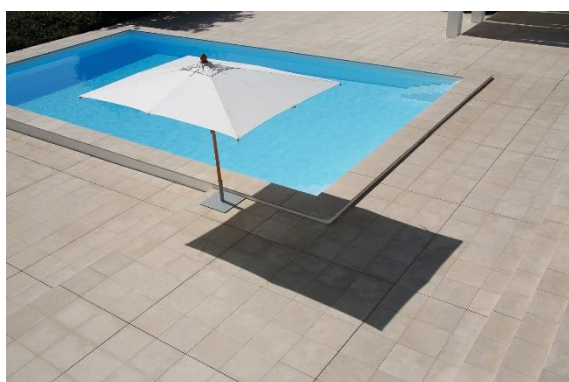
We recommend two people undertake this task, especially with our larger parasols

1. Lower the canopy and remove the parasol from the table and base.
2. Open the parasol and place it carefully on its side on grass or other soft surface to prevent damage to the rib pockets.
3. Thoroughly hose down the canopy with clean water and then gently scrub each panel with warm soapy water, rinse with clean water and allow to air dry.
4. To remove mildew stains, prepare a mild solution of 8fl oz/227ml of bleach plus 3fl oz/60ml of natural soap per gallon/4.5 litres of water. Sponge it on the affected area and allow to soak in.
5. Gently scrub or sponge the affected area with the solution, thoroughly rinse with clean water and allow to air dry.



## Parasol Pole, Ribs and Finials

As necessary, you may lightly sand the parasol pole, ribs, finial etc. to remove any peeling that occurs and then re-coat with an exterior varnish in accordance with the manufacturer's instructions.



Napoli Parasol 3.5 x 2.5 metre Ø - 61 mm pole (4NA35R.302). This parasol has a Telescopic mechanism to allow it to close over a table.

## Pulley

Use the pulley to lower the parasol canopy. Do not allow the canopy to drop, which might cause damage.

## Extreme Weather

In cases of extreme weather, we strongly recommend that you take down and store your parasol until it passes. If you cannot do this then ensure the parasol is in the closed position.



Napoli Cantilever 3.5 x 3.5 (4NAC35S.302),  
Napoli Cantilever Freestanding Base (4PBFC.04),  
Monterey Armchair x 4 (1MTA.T) and Monterey  
Table 100 with Oxide Ceramic top (2MT10.805)



## Use of a base

You should always use a base with a parasol. Bases are available as the following types, standard, freestanding, floor fixing or in-ground. You need to order the base separately. We make our parasol bases from steel with zinc electroplating and a durable, grey powder coat finish.

## Selecting a Parasol base

When ordering a base, the pole diameter of your parasol determines the correct size of base to order. For example, the Napoli Parasol 2.8 metre (4NA28C.302) has a 38mm pole and can be used with either a Parasol Standard base 38 (4PBS), a Parasol Freestanding Base 38 (4PBFS), a Parasol Floor Fixing Base 38 (4PBFFS) or a Parasol In-ground Base 38 (4PBUS). Our Parasols have either a 38mm or 61mm diameter pole. Special bases for high dining and pedestal tables are also available.



Left - Parasol Standard Base 61 (4PBL)

Right - Parasol Pedestal Base 59 (4PBPL)



## Bases for the Napoli Cantilever Parasol

The Napoli Cantilever Parasols (4NAC35S.302 and 4NAC40S.302) require either a Napoli Cantilever freestanding base (4PBFC.04) or a Napoli Cantilever Parasol In-ground base (4PBUC.04). The freestanding base must be weighted with 12 paving slabs 45cm x 45cm x 3cm, which are not included.



Left - Napoli Cantilever Parasol Freestanding Base (4PBFC.04)

Right - Napoli Cantilever Parasol In-ground Base (4PBUC.04)





## Blanking Caps & Reducer Rings

A blanking cap fills the parasol hole in your table when used without a parasol. A reducer ring reduces movement of a parasol pole in a table top. The pole diameter of your parasol determines the correct size to use. Available in brass or stainless steel.

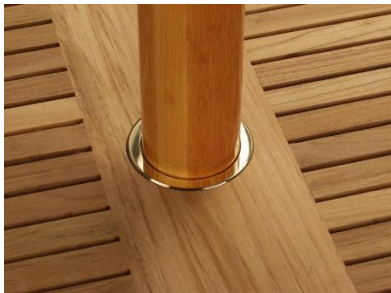


Table Reducer Ring - Brass 61  
(4PR.61)



Table Reducer Ring -  
Stainless Steel 38  
(4PRSS.38)



Table Blanking Cap - Brass  
(4PR.00)

## Care Products

Special care products are available to maintain the beauty of your Barlow Tyrie furniture. We recommend you use the following care product for parasols.



### Fabric Weather Guard

Product code: 4FWG

Fabric Weather Guard protects the fabric and slows down the ageing effects of weathering. Supplied with its own special applicator pad.

Quantity: 1 litre / 33 fl oz

Available from your Barlow Tyrie Stockist.



## Product Care Videos

Our product care videos and informative care sheets help you keep your furniture in pristine condition.

[How to Operate Cantilever and Telescopic Parasols](#)



## Repair & Maintenance Queries

UK and Europe – Please contact customer service via [uksales@teak.com](mailto:uksales@teak.com).

USA – Please contact customer service via [usasales@teak.com](mailto:usasales@teak.com).

Before carrying out any repair to your Barlow Tyrie furniture, please read our terms, conditions and warranty.

## Your Barlow Tyrie Stockist

You can search for your local Barlow Tyrie Stockist using this link [nearest stockist](#).



**BarlowTyrie**

Est 1920

## Care of Powder Coated Frames

These furniture collections feature powder coating - Aura, Equinox, Layout, Mercury, Monterey and Titan.



Equinox Deep Seating Armchair (1EQPDA.02.512.3941) and Equinox Deep Seating Ottoman (1EQPDO.02.512.3941). Both feature a powder coated 316 marine grade stainless steel frame in Arctic White and Adriatic Blue cushions

Non-furniture items that feature powder coating include Parasol Bases. All our standard parasol bases are powder coated Grey .03. Our cantilever parasol bases are powder coated Champagne .04.



Parasol Standard Base 61 with powder coated frame in grey. For use with the below Napoli Parasols,

- Napoli Parasol 3 metre - Ø 61mm pole (4NA30S.302)
- Napoli Parasol 3.5 metre - Ø 61mm pole (4NA35C.302)
- Napoli Parasol 3.5 x 2.5 metre - Ø 61mm pole (4NA35R.302)
- Napoli Parasol 4 metre - Ø 61mm pole (4NA40C.302)



Napoli Cantilever Parasol Freestanding Base with powder coated frame in Champagne. For use with the below Parasols,

- Napoli Cantilever Parasol - 3.5 metre (4NAC35S.302)
- Napoli Cantilever Parasol - 4 metre (4NAC40S.302)

Other types of parasol base are available.



**BarlowTyrie**

Est 1920

In addition to our standard stainless-steel frames, we offer a powder coated stainless steel frame option, which gives a stunning visual effect. We use an environmentally-friendly process to clean and etch the aluminium and stainless steel before applying a high-quality oven-fired powder coating.

## Colour options

All powder coated frame colour options can be viewed on our website or in our catalogue.

## Care & Maintenance

It is important that the finish is cleaned regularly using a solution of mild detergent in warm water to retain the aesthetic qualities and the expected long life. Surfaces should be cleaned using a soft cloth, sponge or a natural bristle brush, avoiding abrasive materials that may damage the finish. The frequency of cleaning depends upon the environment in which the products are placed but as a general guide an annual clean will suffice in most urban environments. In environments with high pollution, such as marine and swimming pools, cleaning should be more frequent.



Layout Table 200 (2LY20.14) and Layout 130 Bench. Both feature a powder coated 316 marine grade stainless steel frame in Forge Grey with a teak tabletop and seat



**BarlowTyrie**

Est 1920

## Frame Touch Up Paint

Touch-up paints are available to repair any damage that might occur. Localised damage to powder coated finishes can generally be successfully concealed. The exact technique depends on the nature and extent of the damage. Powder-coat is a “dry” baked on finish, not a “wet” applied paint, therefore, our “wet” touch-up paints do not exactly match the original colour. See colour options available below. Contact your Barlow Tyrie stockist to place an order.

7TUP.01 “Graphite” touch-up paint – 12ml

7TUP.02 “Arctic White” touch-up paint – 12ml

7TUP.04 “Champagne” touch-up paint – 12ml

7TUP.08 “Black” touch-up paint – 12ml

7TUP.14 “Forge Grey” touch-up paint – 12ml



Titan Serving Table - with a black frame (2TIS.08)

## Repair & Maintenance Queries

UK and Europe – Please contact customer service via [uksales@teak.com](mailto:uksales@teak.com)

USA – Please contact customer service via [usasales@teak.com](mailto:usasales@teak.com)

Before carrying out any repair to your Barlow Tyrie furniture, please read our terms, conditions and warranty.

## Your Barlow Tyrie Stockist

You can search for your local Barlow Tyrie Stockist using this link [nearest stockist](#).

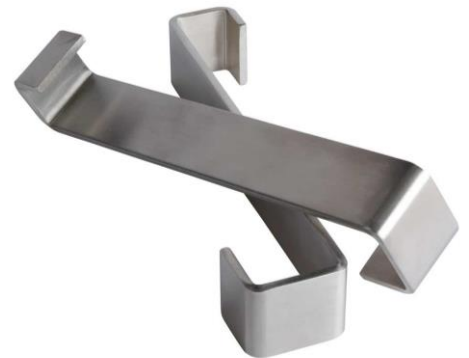
## Security Fastenings

We have two ways to secure your furniture, Seat Fixing Irons and Brass Security Fasteners. If you are unsure which option is best for you then please speak to your dealer.

### Seat Fixing Irons

A pair of Stainless-Steel seat fixing irons to prevent the unauthorized movement of a seat in a public place. These fixing irons must be cast into a concrete block set in the ground.

- Are made from Stainless Steel and sold in sets of two.
- Must be cast into a concrete block, which secures the seat permanently, preventing its unauthorised movement or removal.
- Are a good choice for all public places such as parks and cemeteries.
- Require no maintenance or ongoing checks.



Seat Fixing Irons (4FI)



Rothesay Seat 180  
(1RO18) and Seat Fixing  
Irons (4FI)





**BarlowTyrie**

Est 1920

## Brass Security Fasteners

A set of 4 polished brass security fasteners to prevent the unauthorized movement of a seat or other wooden item in a public area. Supplied with a tamper proof fixing for use on floors of concrete, paving or wood.

- Are made from polished brass and sold in sets of four.
- Are designed to secure any piece of wooden furniture in place on a stone or wooden floor.
- Include tamper-proof fixings for use on a stone or wooden floor.
- Include a special screwdriver bit to secure the tamper-proof fixings.
- The item of furniture can be removed when required using the special screwdriver bit.



Security Fasteners (4SF)



Rothesay Seat 180 (1RO18) and Security Fasteners (4SF)



**BarlowTyrie**

Est 1920

## Care Products (Seat Fixing Irons only)

Special care products are available to maintain the beauty of your Barlow Tyrie furniture. We recommend you use the following care product for stainless steel furniture.



### Stainless Steel Clean and Guard

Product code: 4SSCG

Description: All stainless steel is susceptible to brown surface marks, which are cosmetic and do not damage the product. Remove these marks by regular cleaning with this care product, which leaves a fine layer of Teflon® to help prevent their appearance. Supplied with its own special applicator pad.

Quantity: 1 litre / 33 fl oz

## Repair & Maintenance Queries

UK and Europe – Please contact customer service via [uksales@teak.com](mailto:uksales@teak.com)

USA – Please contact customer service via [usasales@teak.com](mailto:usasales@teak.com)

Before carrying out any repair to your Barlow Tyrie furniture, please read our terms, conditions and warranty.

## Your Barlow Tyrie Stockist

You can search for your local Barlow Tyrie Stockist using this link [nearest stockist](#).



**BarlowTyrie**

Est 1920

## Care of Slings and Woodland Screen Curtains

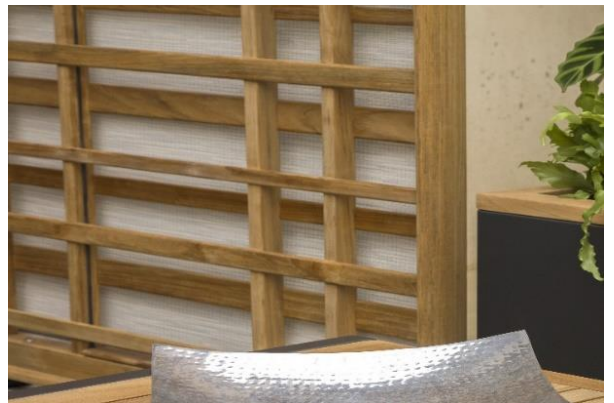
We use the following three materials for the seats and backs on our Sling furniture plus the optional curtain on our Woodland Screen. We show colour options in our catalogue and on our website

### Textilene® Fabric

Colours Charcoal .500, Titanium .502, Platinum .504, Pearl .505 are available on collections Atom, Aura, Cocoon, Equinox (non-powder coated), Horizon, Mercury (non-powder coated), Monterey and Woodland.

Martinique .509 is available on Woodland Screen Curtain only and Denim .514 is available on Atom collection only.

Woodland Screen (3WS23), Woodland Screen Curtain in Martinique (3WSC23.509), Aura Planter 50 with Graphite frame and teak trim.



Focusing on subtle patterns that read as textures, Textilene® achieves an elevated indoor aesthetic in your outdoor setting and guarantees that our slings are strong, durable, mildew resistant, and require the minimum of maintenance. After rain, a light tap and any water simply drops off.



Horizon Armchair with Textilene® Slings in Titanium (1HOAS.502) and Drummond Table 185 (2DR18)



**BarlowTyrie**

Est 1920

## Sunbrella® Woven Fabric

Colours Carbon .513 and Seagull .512 are available on collections Equinox powder coated, Mercury powder coated and Woodland Screen Curtain (Carbon only).

We use this fabric for extra luxury, blending the strength of PVC with the softness of Sunbrella® acrylic yarn for added comfort.

Equinox Carver shown with powder coated stainless steel frame in Graphite and Carbon Sunbrella® woven fabric sling (1EQPA.01.513) and powder coated Arctic White frame with Seagull Sunbrella® woven fabric sling (1EQPA.02.512)



Equinox Lounger with powder coated stainless steel frame in Arctic White with Seagull Sunbrella® woven fabric sling (1EQPL.02.512).



**BarlowTyrie**

Est 1920

## Jacquatex® Fabric

Colour Ivory .601 is only used for the Woodland Screen Curtain.  
This fabric is made from polyester yarn which is hard wearing and durable.

## Care and Maintenance

All these materials are suitable for outdoor use and require minimal maintenance.

We can supply replacement slings for current and some discontinued products; please contact our customer service department with the model of your furniture to enquire.

## Care Products

Special care products are available to maintain the beauty of your Barlow Tyrie furniture. We recommend you use the following care product for Sling furniture.



### Woven & Sling Non Foam Cleaner

Product code: 4WTC

Woven & Sling Non-Foam Cleaner is a non-foam agent that maintains woven furniture, Textilene® slings and Sunbrella® fabrics without unsightly residue. Supplied with its own special applicator pad.

Quantity: 1 litre / 33 fl oz

Available from your Barlow Tyrie Stockist.

## Repair & Maintenance Queries

UK and Europe – Please contact customer service via [uksales@teak.com](mailto:uksales@teak.com)

USA – Please contact customer service via [usasales@teak.com](mailto:usasales@teak.com)

Before carrying out any repair to your Barlow Tyrie furniture, please read our terms, conditions and warranty.



**BarlowTyrie**

Est 1920

## Your Barlow Tyrie Stockist

You can search for your Barlow Tyrie Stockist using this link [nearest stockist](#).



## Care of Stainless Steel Furniture

### Properties

We make our furniture using 316 “marine grade” stainless steel, which will best withstand the rigours of an outdoor environment. We have added selected products to our Mercury and Equinox ranges that features an attractive powder-coat finish on the 316 stainless steel to give the ultimate protection in the harshest marine environment.



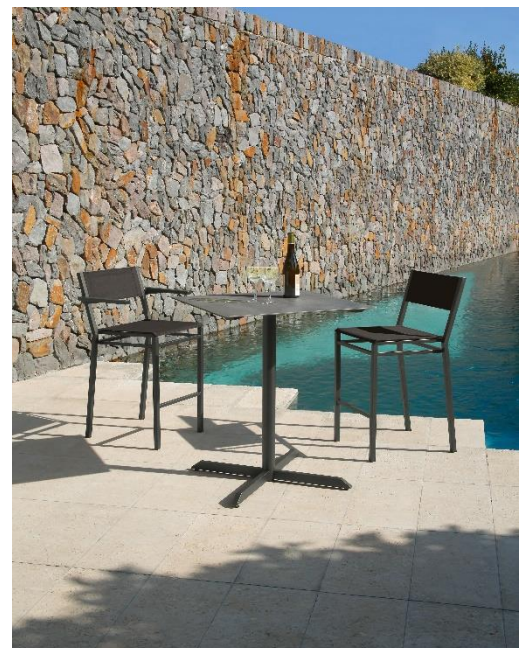
Layout Dining Armchair with a Powder Coated Stainless Steel frame in Arctic White and solid teak seat, arms and backrest

### Use in chlorinated indoor environments

Stainless steel furniture used in a chlorinated indoor environment will require frequent cleaning and we therefore recommend that you use our powder coated products.

If you have any concerns regarding the use of 316 grade stainless steel in your pool area then please contact our customer services.

Equinox High Dining Carver with a Graphite frame and Carbon sling (1EQPHC.01.513), Equinox High Dining Pedestal Table 70 with a Graphite frame and Dusk ceramic top (2EQPH07.01.808) and Equinox High Dining Chair with a Graphite frame and Carbon sling (1EQPH.01.513). All feature a Powder Coated Stainless Steel Frame.





## Do I need to store my furniture in the winter?

No, you can leave Barlow Tyrie furniture outdoors, uncovered, all year round. If you choose to cover your furniture during the winter you should use a material that allows wood to breathe. We make our furniture covers using WeatherMAX®, a modified high UV resistant polyester fabric that offers superior strength and durability. These covers are available from your Barlow Tyrie stockist.



Cover for Equinox Armchair 4 Stacked (400905)



## Maintenance

You should undertake regular maintenance using our care product to preserve the fine appearance of your furniture. Cleaning once or twice a year will be adequate in most circumstances but we recommend more frequent cleaning in a coastal or swimming pool environment. We recommend that you regularly rinse your furniture with fresh water to remove condensed chlorinated moisture.

Conventional abrasive cleaners or strong acidic cleaners should never be used on stainless steel as this can damage the finish. Observing a regular maintenance and rinsing program will maintain the quality of the stainless steel finish for many years.



Mercury Armchair with a Stainless Steel Frame, solid teak arms and Titanium Sling (1MEA.502)



**BarlowTyrie**

Est 1920

## Care Products

Special care products are available to maintain the beauty of your Barlow Tyrie furniture. We recommend you use the following care product for stainless steel furniture.



### Stainless Steel Clean and Guard

Product code: 4SSCG

Description: All stainless steel is susceptible to brown surface marks, which are cosmetic and do not damage the product. Remove these marks by regular cleaning with this care product, which leaves a fine layer of Teflon® to help prevent their appearance. Supplied with its own special applicator pad.

Quantity: 1 litre / 33 fl oz

## Product Care Videos

Our product care videos and care sheets will help you keep your furniture in pristine condition.

### [How to Clean Stainless Steel Outdoor Furniture](#)





**BarlowTyrie**

Est 1920

## Repair & Maintenance Queries

UK and Europe – Please contact customer service via [uksales@teak.com](mailto:uksales@teak.com)

USA – Please contact customer service via [usasales@teak.com](mailto:usasales@teak.com)

Before carrying out any repair to your Barlow Tyrie furniture, please read our terms, conditions and warranty.

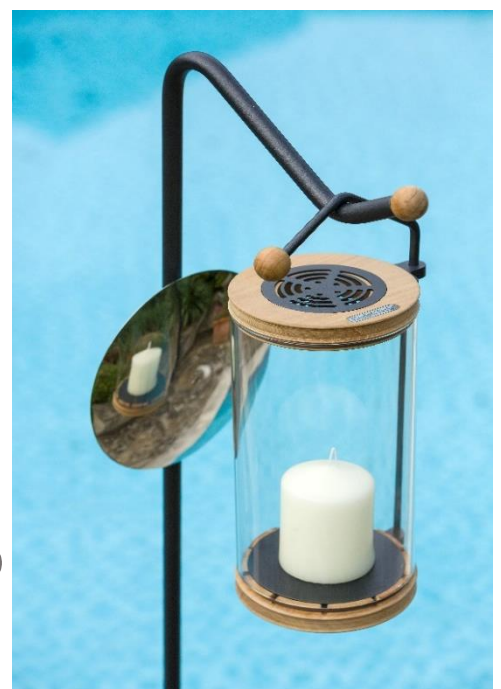


Equinox Deep Seating Armchair with 316 marine grade stainless steel frame, solid teak arms and Charcoal cushions (1EQDA.3705)

## Your Barlow Tyrie Stockist

You can search for your local Barlow Tyrie Stockist using this link [nearest stockist](#).

Luna Lantern with a solid teak top and base and Powder Coated Stainless Steel frame in Graphite (3LL)





**BarlowTyrie**

Est 1920

## Care of Teak

### Frequently Asked Questions

#### What are the properties of teak?

Teak is a deciduous hardwood tree from managed plantations; it does not come from tropical rainforests. Teak has a naturally high oil content, making it stable and resistant to rotting when exposed to climatic extremes. For centuries these unique qualities have made teak the preferred choice for marine decking and construction; hence it is considered the premium timber for outdoor furniture. Teak wood will naturally weather from golden brown to a silver-grey patina colour.

#### What is rustic teak?

The Titan range incorporates “Rustic Teak”, which is laminated and includes a beautiful wild grain pattern and will also have knots that give it a rugged farmhouse appeal. Rustic teak wood is a natural product that will react with the outdoor elements and look more rustic as the product ages. The laminated wood will start to part, and the wood will turn a lovely shade of silver. This is its natural course.



#### What is a FLEGT licence?

Our teak products are made of FLEGT-licensed wood from Indonesia. The legality of the wood is assured through Indonesia’s national timber legality assurance system, SVLK, a mandatory legality and sustainability certification system, and the FLEGT licensing scheme. FLEGT licences show that a country manages its forests according to forest management and environment laws and labour and community welfare legislation. FLEGT licences show that logging rights have been granted according to the law and that timber is legally harvested. The licences also confirm that products comply with legal requirements for trade and export and that required taxes and fees are paid. FLEGT licensed wood is considered to comply with the EU Timber Regulation fully. Customers who place our FLEGT-licensed timber products on the EU market do not need to undertake further due diligence.

For further information on

SVLK [The Indonesian Timber Legality Assurance System](#)

FLEGT [FLEGT Licenced Timber Essential Information](#)



**BarlowTyrie**

Est 1920

### What is the teak weathering process?

Over time in an outdoor environment, untreated teak furniture exposed to the sun will turn a beautiful silver-grey colour. The length of time this takes will vary with climatic conditions. Not only is it common for a teak bench, chair, or table to last 70 years standing out in the elements, it is also common to pass down such furniture to future generations as an heirloom.



Sissinghurst Seat (1SI) – weathered



Titan Bench 200 (1TI20) - weathered

### Why do occasional cracks appear on my furniture?

Teak is a natural material, and as such fine cracks in the end grain of components, e.g., legs and arms, may appear and then disappear with variations in the weather and the consequent change in the moisture content of the wood. Such fine cracks are expected, especially in heavier components, and will not affect the life or serviceability of your furniture.

### Do I need to store my furniture during the winter?

No, Barlow Tyrie teak furniture can be left outdoors, uncovered, all year round. If you choose to cover your furniture outdoors during the winter, you should use a material that allows the wood to breathe. Optional furniture covers and storage bags are available.



Monterey Armchair (1MTA.401) and Cover (400111)



**BarlowTyrie**

Est 1920

### **Do I need to oil my teak furniture?**

Treating with teak oil or other preservatives is not necessary; it will not extend the life of your furniture and is purely cosmetic. We do not recommend oiling your furniture.

### **Will the metal fittings on my furniture last as long as the teak?**

We only use the best marine quality solid brass and stainless steel on our furniture. With due care and attention, these should last as long as the teak.



Horizon Carver with a Titanium Sling  
(1HO CF.502)

## **Not Just Teak Furniture**

Alongside our teak furniture, we also have other stylish teak items. The sleek Aura planters with teak accents (below left - 65 model shown, 3AUP65.01 other sizes available), storage chest 150 (below middle - 3SC15), and the modern geometric Luna Lantern (bottom right - 3LL). All made with high-quality teak, they offer stylish additions to your outdoor living.








**BarlowTyrie**

Est 1920

## Care Products


Special care products are available to maintain the beauty of your Barlow Tyrie furniture. We recommend you use the following care products for teak furniture. Care products are available from your Barlow Tyrie Stockist.

Name	Product code	Description	Quantity
<b>Teak Cleaner</b> 	4TC	Teak Cleaner cleans and restores discoloured, dark grey teak. Contains brightener ingredients that will restore teak to its original colour. Supplied with its own special applicator pad.	1 litre / 33 fl oz
<b>Teak Colour Guard</b> 	4TCG	Teak Colour Guard helps maintain the golden-brown colour of new teak. Supplied with its own special applicator pad.	1 litre / 33 fl oz
<b>Teak Oil</b> 	4TO	Teak Oil is the traditional method of retaining the original colour of new teak. However, its repeated application will make the teak much darker in colour, and for this reason, we do not recommend its repeated use.	500 ml / 16.5 fl oz



**BarlowTyrie**

Est 1920

<p><b>Teak Stain Guard</b></p> 	<p>4TSG</p>	<p>Teak Stain Guard forms an invisible layer to protect your teak from everyday stains such as butter, oil, and red wine, making cleaning accidental spills easy. Supplied with its own special applicator pad.</p>	<p>1 litre / 33 fl oz</p>
--	-------------	---	-------------------------------



Our discontinued Ascot folding table, which has had an application of our Teak Colour Guard (4TCG) applied. View our 'How to Transform Weathered Teak Furniture'

## Product Care Videos

Our product care videos and informative care sheets help you keep your furniture in pristine condition.

[How to Transform Weathered Teak Furniture](#)

[How to Clean Teak Garden Furniture](#)





**BarlowTyrie**

Est 1920

## Repair & Maintenance Queries

UK and Europe – Please contact customer service via [uksales@teak.com](mailto:uksales@teak.com)

USA – Please contact customer service via [usasales@teak.com](mailto:usasales@teak.com)

Before carrying out any repair to your Barlow Tyrie furniture, please read our terms, conditions and warranty.

## Your Barlow Tyrie Stockist

You can search for your local Barlow Tyrie Stockist using this link [nearest stockist](#).



Layout Table 200 (2LY20.14) and Layout 130 Bench. Both feature a powder coated 316 marine grade stainless steel frame in Forge Grey with a teak tabletop and seat