



yanou.

Collaborate with nature.

YANOUSTUDIO LOOKBOOK

Social @yanou.studio
Website www.yanou.studio

Here you are the artist and nature is your *muse*.

[Our Story](#)

[Our Materials](#)

[ConClay™ Planters](#)

[Our Samples](#)

[Contact](#)

[Our Showrooms](#)

yanou studio was born from a deep passion for nature and a commitment to timeless biophilic design principles that have inspired artists and designers since the first vessels were crafted many generations ago.

The pieces in our collections are designed to elevate both indoor and outdoor spaces, and we

remain the first choice for design professionals seeking to specify truly original indoor and all-season planters, bowls, and tables for their projects.

You'll find **yanou studio** designs in the best hospitality, residential, and commercial spaces around the US.



Our Story

Organic, modern, simple.

Meticulously crafted by hand in our studio for you using materials that stand the test of time (and the elements too!).

Named to honor a new beginning, **yanou** represents our collaborative relationship with the natural world and offers a new perspective for living in harmony with nature.

Our goal is to redefine outdoor living by combining our Belgian design heritage with expert craftsmanship, innovative materiality, and generous scale to inspire you to create extraordinary environments for your clients.

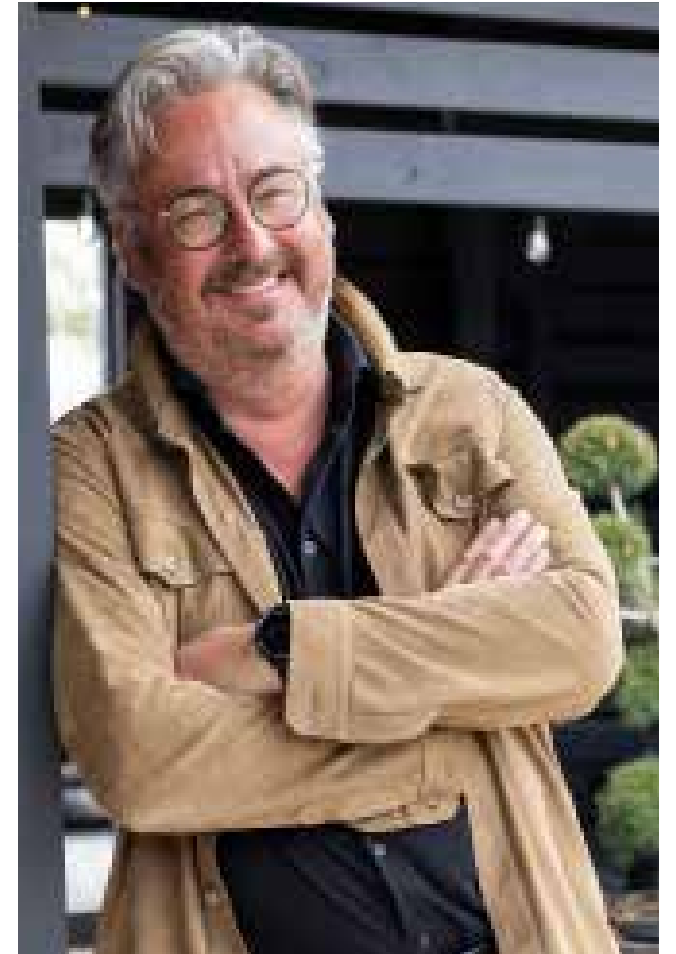


Tom Paeshuys

Founder | **yanou studio**

Just getting back into nature—breathing fresh air, immersing myself in the sound of birds singing—even just an hour with my hands in the fragrant soil of my garden always calms me down and helps me find more creative clarity.

Through years of attending trade shows in both Europe and the United States, I couldn't help but notice the appreciation the US market consistently had for beautiful, hard-to-reach home products from abroad, and especially from Belgium, a country well known for its timeless sense of design and style.



Whenever I get stuck on the solution to a creative or business problem I head outside.

I realized that the solution was to combine my passion for nature, gardening, and design to create products that could be made locally in North Carolina, offering the best of Belgian design with the expertise of American craftsmanship.

The result?

A collection of elegant and timeless planters, bowls, and furnishings that are made by hand and made to last in just 5 weeks. Use them indoors or out, throughout the year. They are designed to withstand extreme weather conditions, salt, sun, and freezing cold.

It's my pleasure to share with you the **yanou studio** brand, and I hope you will come join us in our High Point and New York showrooms or online to get inspired, and to relax.

To restore your mind and connect to your deepest creative inspiration.

Rediscover the invitation that has been calling to you all this time...to collaborate with nature!

We are material alchemists, committed to discovering new and innovative ways to create original forms and surfaces.

The handcrafted nature of our products means that each one is an original —no two pieces are **ever** exactly alike.

The natural imperfections that result from our casting and finishing processes are what make the **yanou studio** collections stand out from their mass produced competitors.

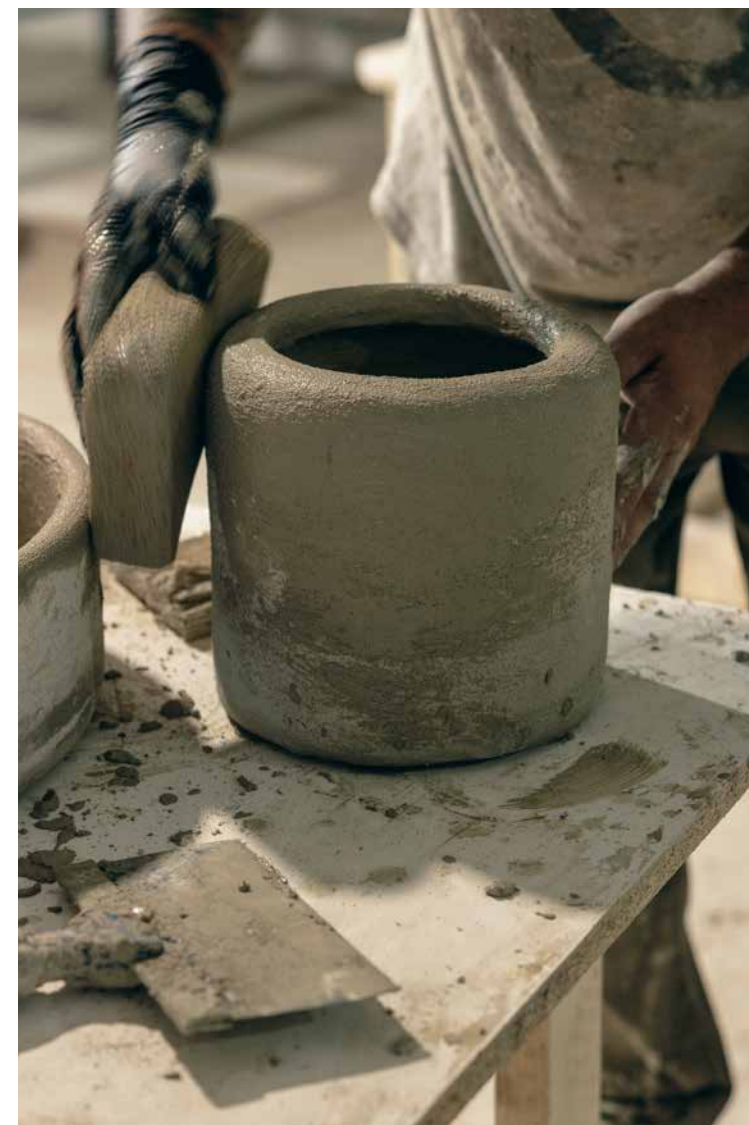
It is this authentic, organic aesthetic that is a hallmark of quality and timelessness in each of our pieces.

We're material alchemists.



Our goal is to help you create beautiful, artfully designed indoor and all-season spaces with our gorgeous range of exceptional planters crafted from ConClay™, weathered brass, and wood.

Raw, organic texture and modern, simple design are what give unique character to each **yanou** collection, and ensure they stand alone as works of art.



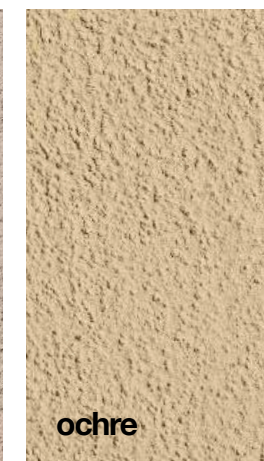
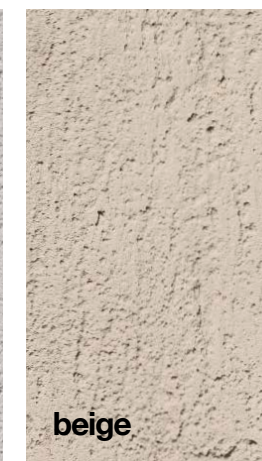
ConClay™ Planters

Our ConClay™ planters are solid as a rock! The durable construction of every planter begins by hand-pouring our proprietary, all-weather concrete composite into its distinctive form.

This inner structure is extremely strong and all-weather resistant.

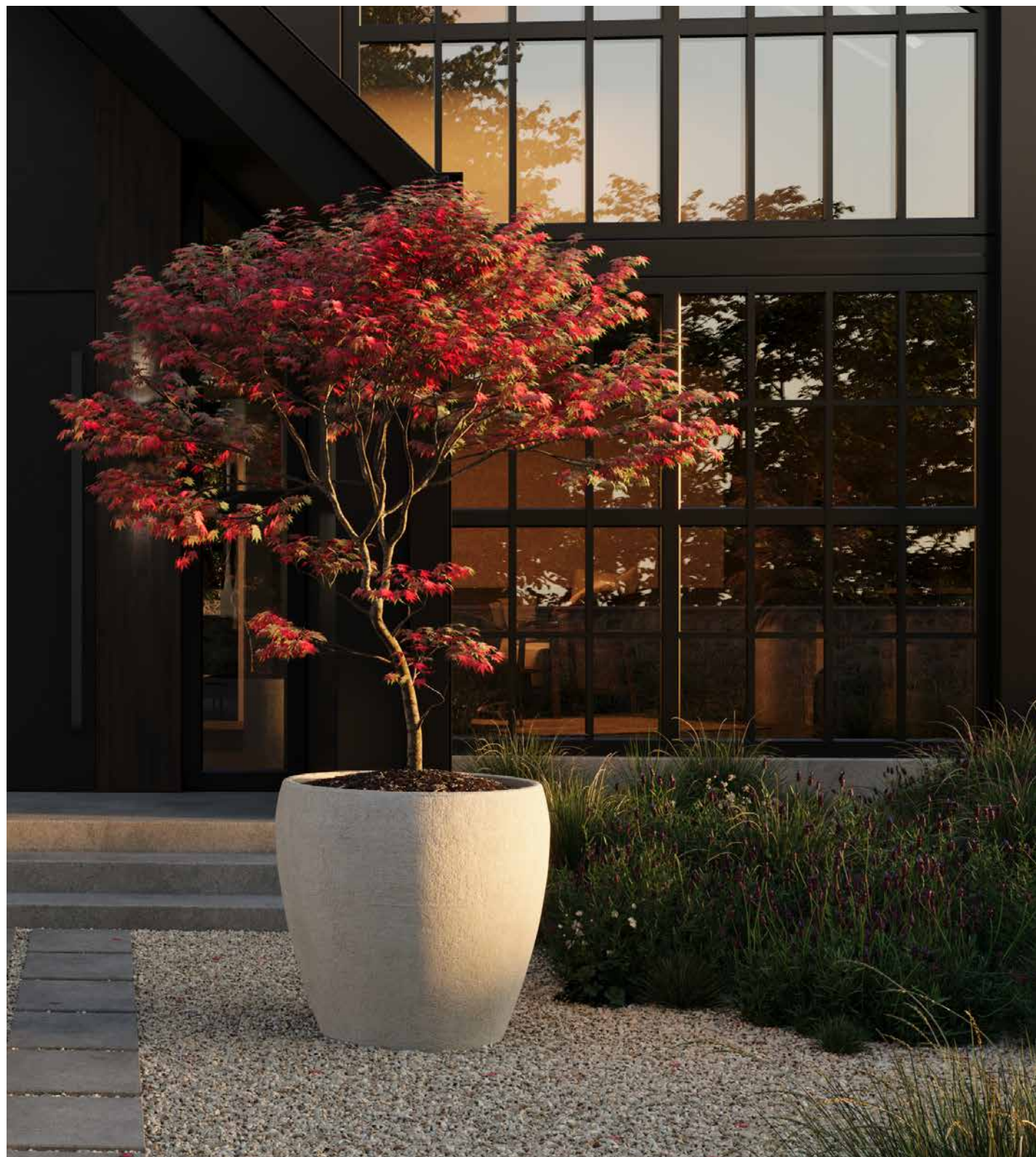
Each form is then time cured to a rock-like durability before being hand finished in naturally pigmented, raw Belgian clay, giving every planter a unique natural texture.

Available in 10 Belgian clay finishes



All of our ConClay™ planters are available in 10 raw Belgian clay finishes, samples available upon request.





ANTWERP

Size 31" h x 30" d
Weight 176lbs



BRUSSELS

Size 18" h x 44" d
Weight 186lbs



MONTREAL

Size 38" h x 30" d
Weight 160lbs



QUEBEC

Size 23.5" h x 30.5" d
Weight 130lbs

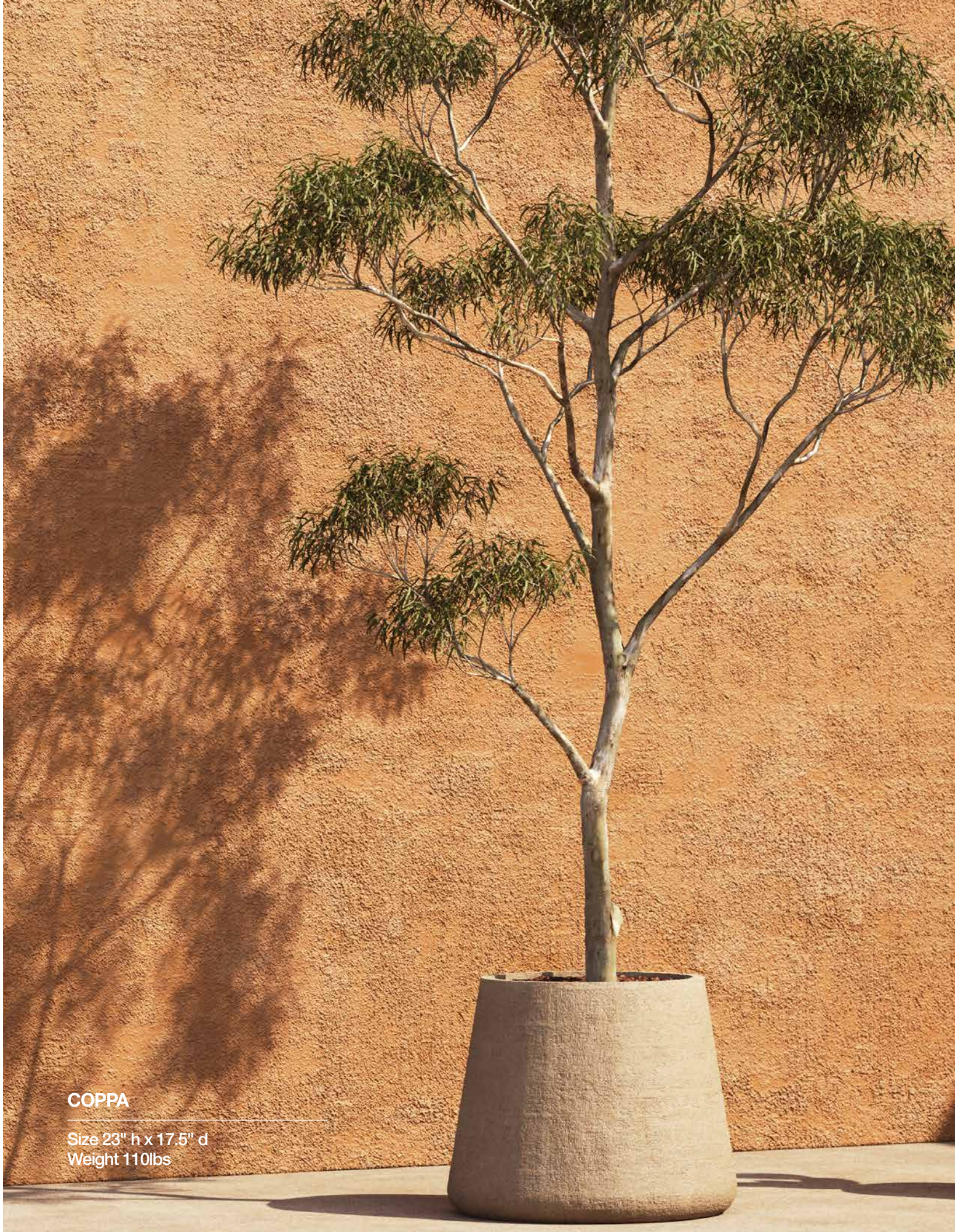






BELLE LARGE

Size 23" h x 17" d
Weight 105lbs



COPPA

Size 23" h x 17.5" d
Weight 110lbs



MUSH TABLES

FERRARA

Size 20" h x 19" d
Weight 95lbs



BELLE SMALL

Size 13" h x 10" d
Weight 36lbs



KOPENHAGEN

Size 18" h x 17" d
Weight 93lbs



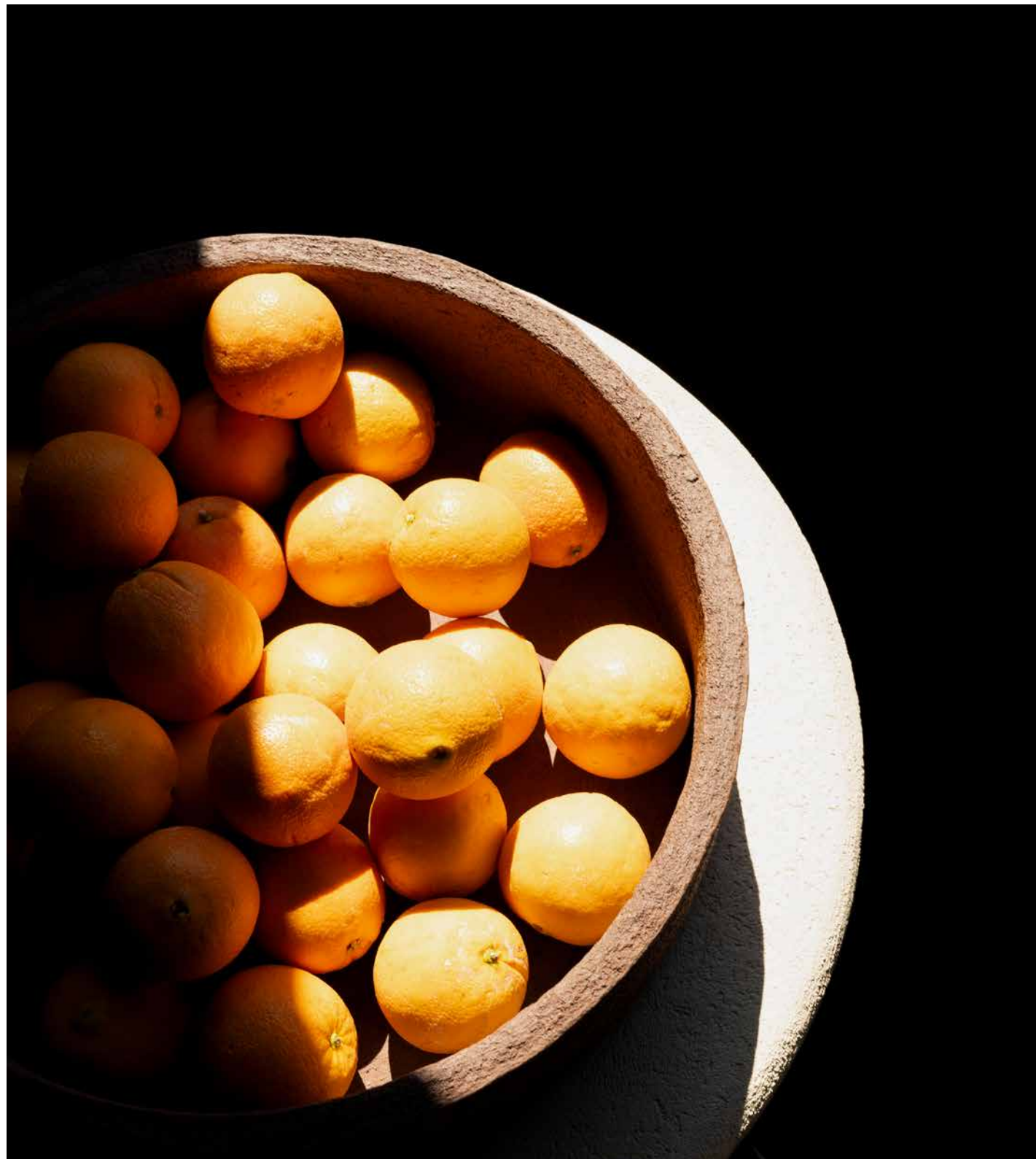
SIENNA

Size 9" h x 23" d
Weight 83lbs

ANTWERP

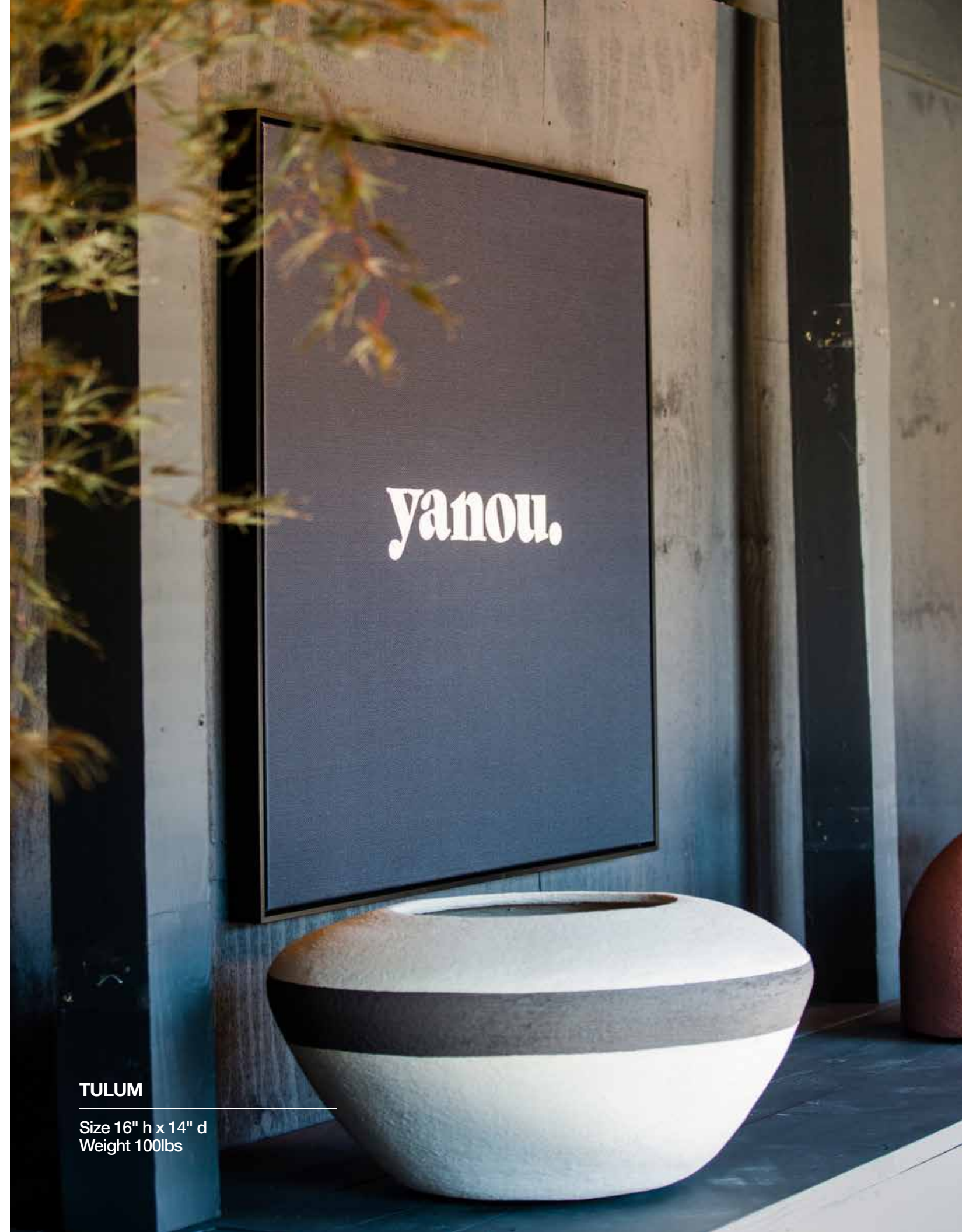
Size 30" h x 30" d
Weight 176lbs





VERONA LARGE

Size 5" h x 20" d
Weight 36lbs



TULUM

Size 16" h x 14" d
Weight 100lbs

yanou studio

HAVANNA

Size 13" h x 17"d
Weight 47lbs

Collaborate with nature.

Contact us

p 336-899-3484
e tom@yanou.studio

High Point Showroom

515 S Hamilton St
High Point, NC 27260

Make an appointment to visit | p 336-899-3484

New York Design Center

Verellen Atelier
200 Lexington Avenue
Suite 801
New York, NY 10016

Monday - Friday 8:30am - 5pm | p 646-293-6695

Join us on Instagram [@yanou.studio](https://www.instagram.com/yanou.studio)

Or browse our full collection online at www.yanou.studio

CHARLOTTE

Size 16" h x 23" d
Weight 78lbs

