



CREDIBLE

GROUP

LA FOUQUETS

New York

SCOPE OF WORK

Guestroom Seating

DESIGN FIRM

MARTIN
BRUDNIZKI
DESIGN
STUDIO



CG

LA
FOUQUETS
New York

SCOPE OF WORK

Guestroom Seating

DESIGN FIRM

MARTIN
BRUDNIZKI
DESIGN
STUDIO



CG

LA
FOUQUETS
New York

SCOPE OF WORK

Guestroom Seating

DESIGN FIRM

MARTIN
BRUDNIZKI
DESIGN
STUDIO



CG

LA
FOUQUETS
New York

SCOPE OF WORK

Guestroom Seating

DESIGN FIRM

MARTIN
BRUDNIZKI
DESIGN
STUDIO



KIMPTON
790NY
New York

SCOPE OF WORK
Guestroom Seating

DESIGN FIRM

CRÈME
JUN AIZAKI
ARCHITECTURE
& DESIGN



CG

KIMPTON 790NY

New York

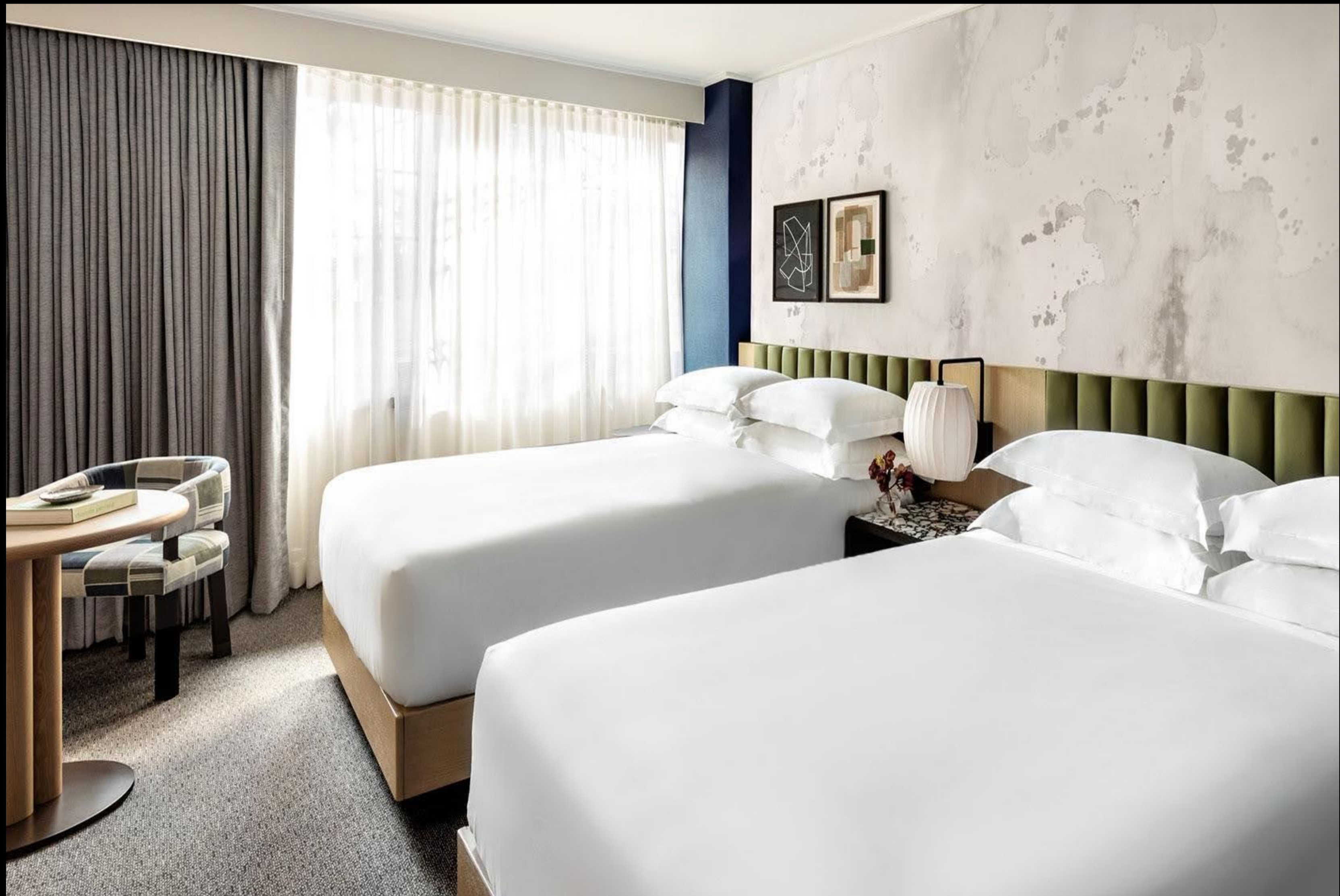
CG

SCOPE OF WORK

Guestroom Seating

DESIGN FIRM

CRÈME
JUN AIZAKI
ARCHITECTURE
& DESIGN



PENDRY NEWPORT BEACH

California

SCOPE OF WORK

Guestroom Seating

DESIGN FIRM

STUDIO
MUNGE



PENDRY NEWPORT BEACH

California

SCOPE OF WORK

Guestroom Seating

DESIGN FIRM

STUDIO
MUNGE



CG

SHERATON MONTREAL AIRPORT

Montreal, Canada

SCOPE OF WORK

Guestrooms + All
Seating & Casegoods

DESIGN FIRM



CG

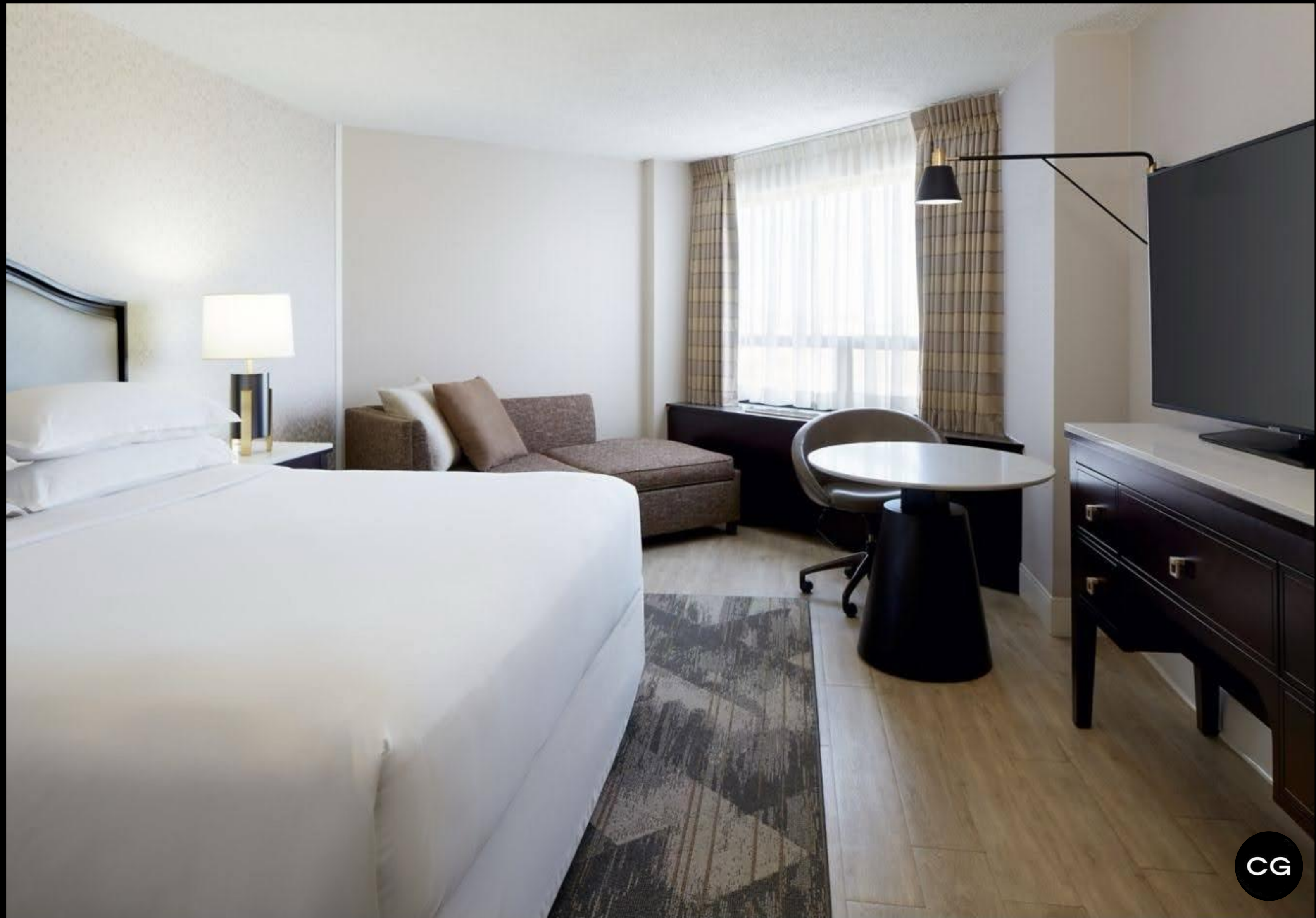
SHERATON MONTREAL AIRPORT

Montreal, Canada

SCOPE OF WORK

Guestrooms + All
Seating & Casegoods

DESIGN FIRM



CG

BELLAGIO SPA TOWER

Las Vegas, Nevada

SCOPE OF WORK
Guestroom Seating

DESIGN FIRM

CHAMPALIMAUD



BELLAGIO SPA TOWER

Las Vegas, Nevada

SCOPE OF WORK

Guestroom Seating

DESIGN FIRM

CHAMPALIMAUD



FOUR SEASONS RESORT LAS VEGAS

Nevada

SCOPE OF WORK

Guestrooms Seating

DESIGN FIRM

kes studio



CG

RAFFLES **BOSTON** MASSACHUSETTS

SCOPE OF WORK

Guestroom Seating

DESIGN FIRM

STONEHILL TAYLOR



RAFFLES **BOSTON** MASSACHUSETTS

SCOPE OF WORK

Guestroom Seating

DESIGN FIRM

STONEHILL TAYLOR



RAFFLES **BOSTON** MASSACHUSETTS

SCOPE OF WORK

Guestroom Seating

DESIGN FIRM

STONEHILL TAYLOR



RAFFLES **BOSTON** MASSACHUSETTS

SCOPE OF WORK

Guestroom Seating

DESIGN FIRM

STONEHILL TAYLOR



GOLDWYNN **BAHAMAS** NASSAU, BAHAMAS

SCOPE OF WORK

Guestrooms + All
Seating & Casegoods

DESIGN FIRM

DIALOG[®]



GOLDWYNN **BAHAMAS** NASSAU, BAHAMAS

SCOPE OF WORK

Guestrooms + All
Seating & Casegoods

DESIGN FIRM

DIALOG®



CG

RITZ CARLTON TORONTO

TORONTO, CANADA

SCOPE OF WORK

Guestrooms + All
Seating & Casegoods

DESIGN FIRM

 **DesignAgency**



RITZ CARLTON TORONTO

TORONTO, CANADA

SCOPE OF WORK

Guestrooms + All
Seating & Casegoods

DESIGN FIRM

 **DesignAgency**



FOUR SEASONS **PALM BEACH**

PALM BEACH, FLORIDA

SCOPE OF WORK

Public Space + All
Seating & Casegoods

DESIGN FIRM

MARTIN
BRUDNIZKI
DESIGN
STUDIO



CG

FOUR SEASONS **PALM BEACH**

PALM BEACH, FLORIDA

SCOPE OF WORK

Public Space + All
Seating & Casegoods

DESIGN FIRM

MARTIN
BRUDNIZKI
DESIGN
STUDIO



PENDRY

Chicago

SCOPE OF WORK

Guestrooms + All
Seating & Casegoods

DESIGN FIRM

 **DesignAgency**



CG

PENDRY

Chicago

SCOPE OF WORK

Guestrooms + All
Seating & Casegoods

DESIGN FIRM

/DesignAgency



CG

21C MUSEUM HOTEL

Chicago

SCOPE OF WORK

Guestrooms + All
Seating & Casegoods

DESIGN FIRM

Deborah Berke
Partners



21C MUSEUM HOTEL

Chicago

SCOPE OF WORK

Guestrooms + All
Seating & Casegoods

DESIGN FIRM

Deborah Berke
Partners



PENINSULA
NEW YORK
NEW YORK

SCOPE OF WORK
Guestroom Seating

DESIGN FIRM



PENINSULA **NEW YORK** NEW YORK

SCOPE OF WORK

Guestroom Seating

DESIGN FIRM

BRS



CG

THE BEEKMAN

New York

SCOPE OF WORK

Public Areas &
Specialty Suites +
All Seating

DESIGN FIRM

MARTIN
BRUDNIZKI
DESIGN
STUDIO



FAIRMONT JASPER PARK

ALBERTA, CANADA

SCOPE OF WORK

DESIGN FIRM



RITZ-CARLTON **PORTLAND** OREGON

SCOPE OF WORK

All Public Space
Seating

DESIGN FIRM

HKS



400 MARKET **STREET** NEW MEXICO

SCOPE OF WORK

Guestrooms + All
Seating & Casegoods

DESIGN FIRM



CG

THE POST VANCOUVER

SCOPE OF WORK

All Public Space
Seating

DESIGN FIRM

AVRO | KO



CREDIBLE GROUP

Sleeper Sofa Program

CG

Our Tiers



Entry Level



Premium Level

Sofa Manufacturing Specifications

Supporting Frame

- Baltic Birch plywood frame with interlocking construction for strength and stability
- Seating frames with curved areas will be fabricated with steam bent plywood.
- All frames are corner blocked, glued and screwed. Joinery is glued and double dowelled to ensure stability, suitable for contract use.
- All seat decks and backs are fabricated with sinuous wire spring construction: 8 gauge at seat, 11 gauge at back to provide long-lasting comfort

Foam

- All foam will comply with CAL 117 as a minimum requirement. A density of 2.0-2.5 is the appropriate range for upholstered furniture used in commercial applications, when in use in high traffic areas
- Seating cushions are wrapped in a Polyester Batting and can range in comfort from firm, to medium-firm, to medium-soft, to plush. Specifications regarding comfort must be detailed at the time of RFQ

Pull-Out Bed Specification

Leggatt & Platt 3500 Classic Square System

- Heavy-duty contract sofa sleeper system considered the easiest to operate in the industry and is engineered with low-profile linkage to keep all metal parts below the mattress line.
 - Pro-Deck two-ply ballistic decking material for enhanced durability and visual appeal
 - Contoured seat section offers a wider seating area by allowing seating close to the arm
 - Anti-Tilt: a necessary feature, always keeping the unit in contact with the floor in the open position
 - Body-support tubes and wires to eliminate sagging

Spring Coil Mattress

- 5.25" spring coil Innerspring system mattress wrapped with cushioning fibres comprised of silk, cotton, linen and synthetic fibres to ensure durability through the density of materials and comfortability for all patrons.
 - Option to have 1" memory foam topper for added comfort.

Mattress Upgrade (+ \$200 per item)

- Gel memory foam infuses gel particles into visco-elastic memory foam, creating a plusher and cooler sleeping material. It's porous, open-cell density allows the cells to be interconnected as opposed to closed-cell foams; thereby making the Gel body more breathable (self-ventilating) and comfortable.
- CertiPUR US Certified; lab tested and certified for commercial use.



ENTRY LEVEL

Sofa Specification

- Plywood framing, generally Maple or Birch
- Straight forward, industry standard sofa dimensions and style; no curved edges or irregular pieces.
- Wood block style feet or legs, if required
- 2” padding material surrounding framing for additional comfort as an industry standard
- Foam fill: Standard; medium-soft

Pull-Out Bed Specification

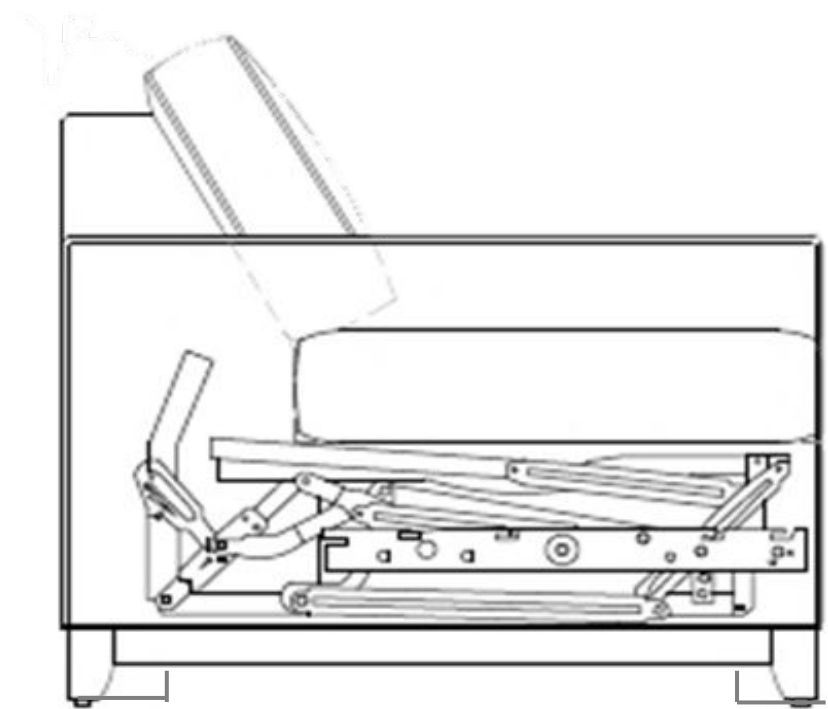
- Leggatt & Platt 3500 Classic Easy Glide system for manual pull-out and release
- 5.25” Spring Coil Mattress

Fabric Specification

- Generally, Grades A-C fabrics including synthetic fibres such as Polyester and Vinyl.
- No additional skirting; fabric is upholstered to framing directly with no visible piping or added finish specifications

Avg. Lead Time: 8-10 weeks

Minimum order: 50+ units



Sofa with Double Bed

Sofa with Queen Bed



PREMIUM LEVEL

Sofa Specification

- Design is critical; detailed engineers and designers work diligently to create and master custom designs with curved frames, dropped arm rests, or intricate details with a focus on ergonomics and comfort.
- Maple or Ash hardwood, plywood and/or steam bent plywood per desired framing
- Visible bases with the use of show wood grain, metal details and/or metal legs
- 2-3" padding material surrounding framing
- Cushions are wrapped in Polyester Batting and are of plush consistency (50/50 synthetic down with feather envelope)

Pull-Out Bed Specification

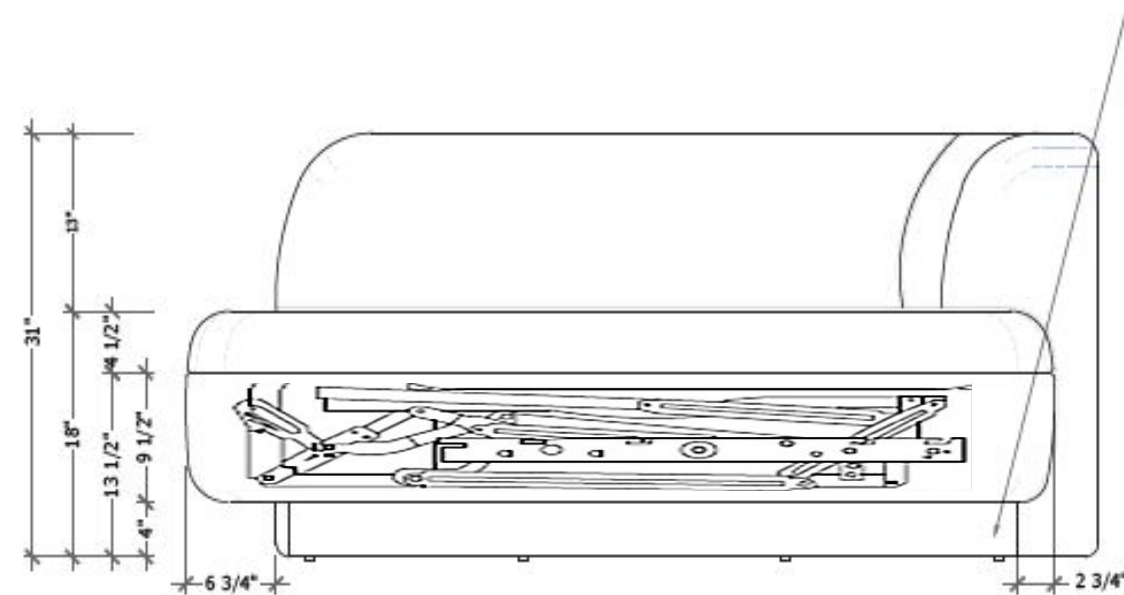
- Leggatt & Platt Classic Easy Glide system for manual pull-out and release
- 5" hypoallergenic foam mattress with 1" memory foam topper for support

Fabric Specification

- Generally, Grade C-F fabrics but not limited to Velvet, Mohair, Chenille, Boucle, Linen, and other performance fabrics
- Various upholstery directions for grain or pattern on finished product
- Option for single or doubled piped seams

Avg. Lead Time: 12-16 weeks

Minimum Order: 50+ units



Sofa with Double Bed

Sofa with Queen Bed



PENINSULA **NEW YORK** NEW YORK

SCOPE OF WORK

Guestroom Seating

DESIGN FIRM



CAPITOL HILL HOTEL

Washington DC

SCOPE OF WORK
Guestrooms Seating

DESIGN FIRM



CG

FAIRMONT JASPER PARK

ALBERTA, CANADA

SCOPE OF WORK

DESIGN FIRM



Hospitality Partners



Our Partners



BENJAMIN WEST

CARROLL / ADAMS

DEBORAH BERKE PARTNERS

INNVEST
Hotels

giannone
petricone
associates



CARVER & ASSOCIATES
HOSPITALITY CONTRACT SERVICES

SOHO HOME

STRATEGY + DESIGN
mackaywong

SUE DULMAGE & ASSOCIATES
INC.



rockwellgroup



Yabu Pushelberg



beyer



C A N O E
HOSPITALITY

Our Partners



CHAMPALIMAUD

HKS

CRÈME
JUN AIZAKI
ARCHITECTURE
& DESIGN

ROSE UNIACKE

STUDIO
MUNGE

I©RAVE



skB
ARCHITECTS

kes studio



ISLYN STUDIO

/DesignAgency



STONEHILL TAYLOR

SHUGARMAN
ARCHITECTURE+DESIGN INC

DIALOG®



CREDIBLE

GROUP

Thank you!